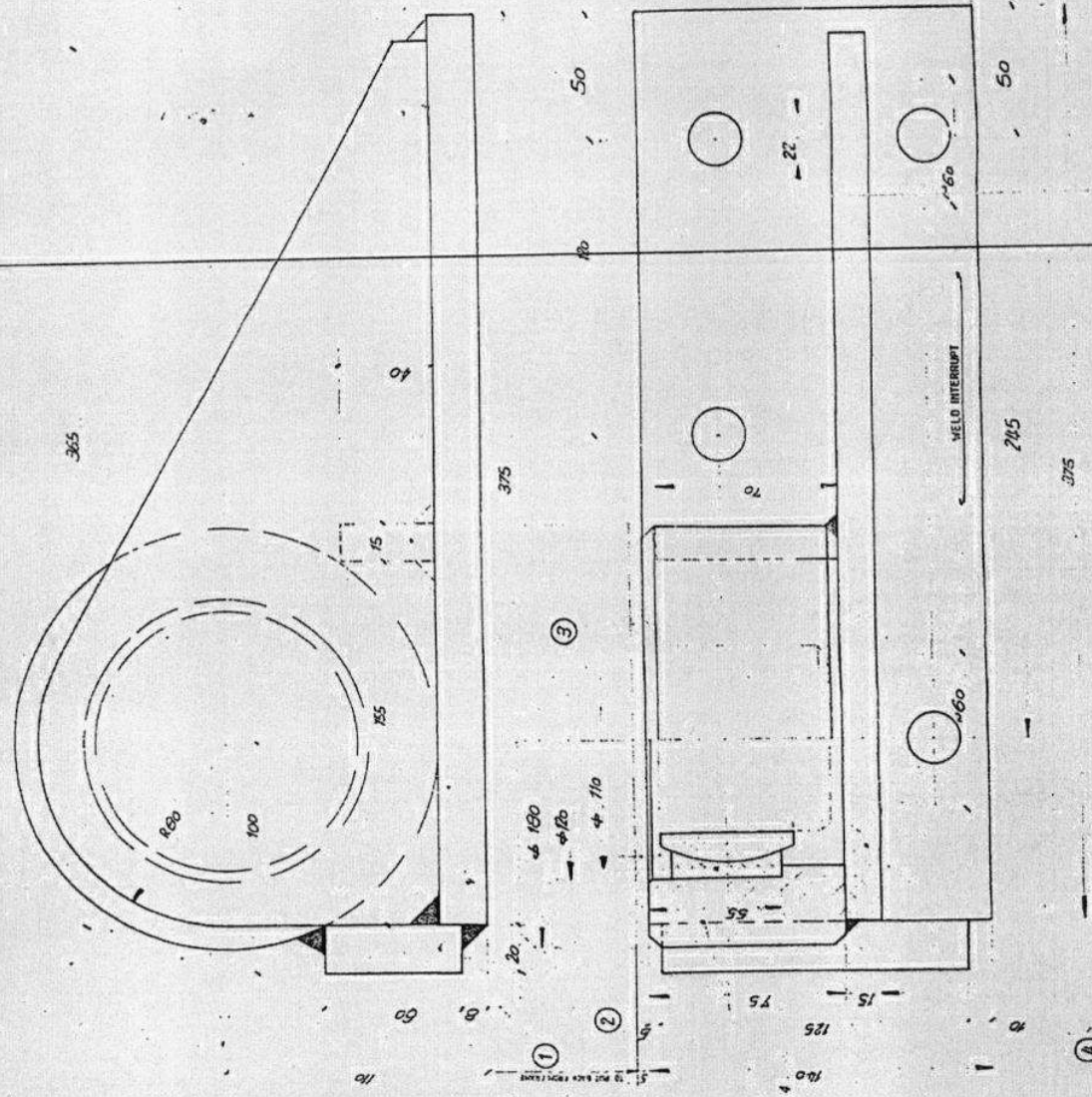
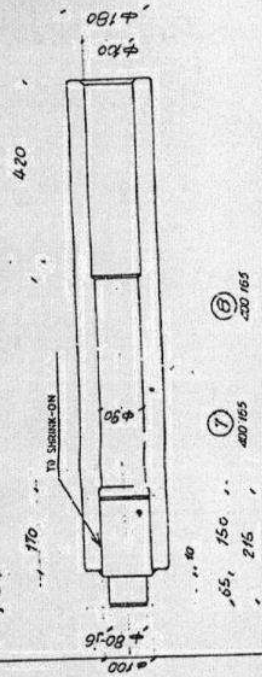


5	4 Bushings
1/2	4 Glass-Dr.
4	Bl 5
2	Bl 5
1	Chopped
2	Fl 30 /
2	Fl 50 /
20	Fl 80 /
12	Fl 80 /
2	Fl 100 /
4	Fl 110 /
2	Fl 200 /
2	Fl 290 /
2	Fl 280 /
21	C AP /
2	C NP

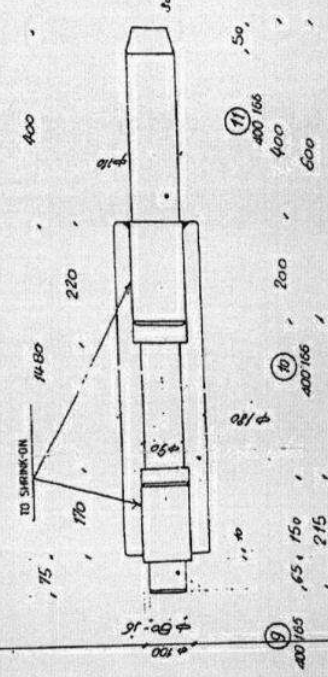
**I**  
 Pos. 18 SEE DRAWING NR. 100 225  
 "IN PERS"  
 M 1.1



**II**  
 Pos. 17 SEE DRAWING NR. 100 225  
 M 1.5  
 75



**III**  
 Pos. 17 SEE DRAWING NR. 100 225  
 M 1.5



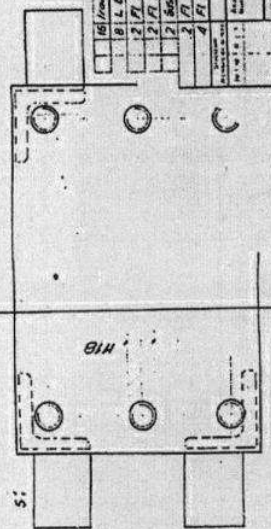
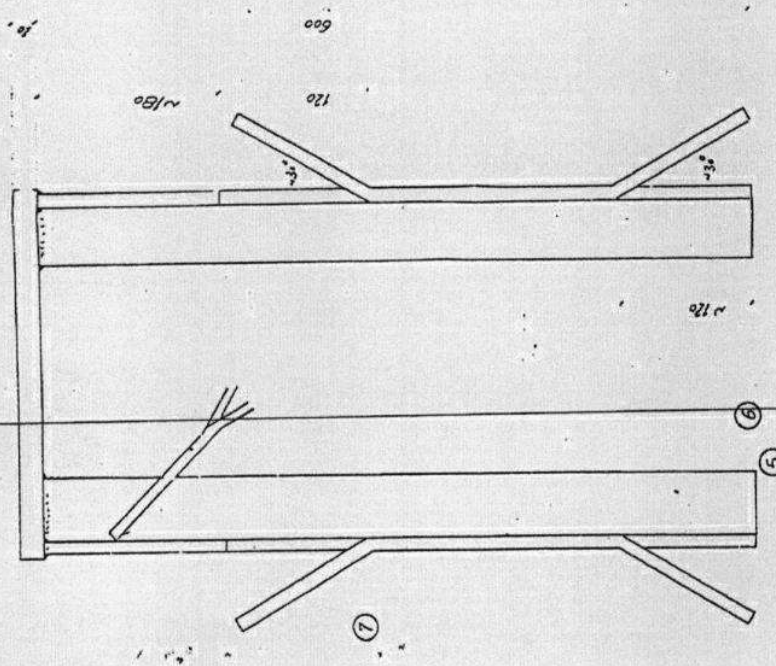
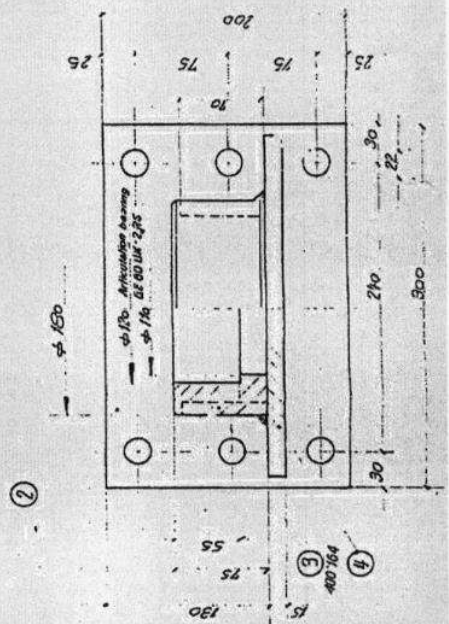
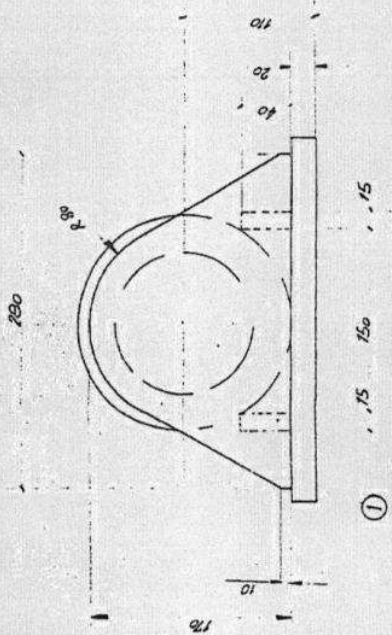
NO.	DESCRIPTION	DATE	BY	CHECKED
11	400 165			
10	400 155			
9	400 153			
8	400 165			
7	400 165			
6	400 165			
5	400 164			
4	365			
3	51 37			
2	400 165			
1	51 37			

NO.	DESCRIPTION	DATE	BY	CHECKED
11	400 165			
10	400 155			
9	400 153			
8	400 165			
7	400 165			
6	400 165			
5	400 164			
4	365			
3	51 37			
2	400 165			
1	51 37			

TRUCK DUMPER SA T066/150 15x3 m  
 PLATFORM-PIVOT BEARING SLEEVE  
 W. H. Mairolf AG, Fahrzeugbau  
 1577 Emskirchen / Schweiz  
 100 227



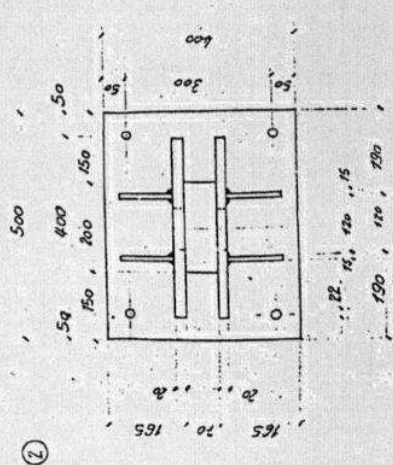
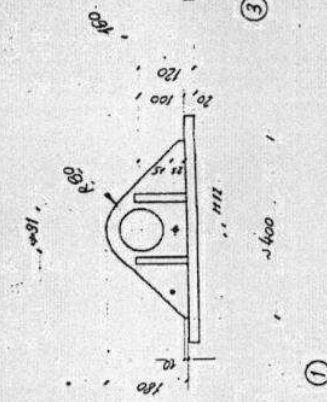
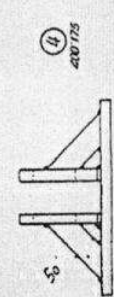
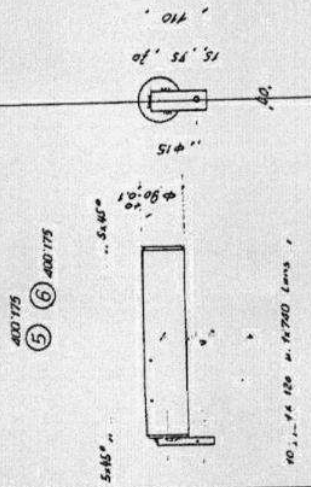




MATERIAL FOR 2 PIECES

16	Iron	160	160	7	51,37
8	L	60	160	12	51,37
2	F	200	70	3	51,37
2	F	170	115	4	51,37
2	F	200	120	3	51,37
4	F	60	115	7	51,37
Zusammengeordnet: 2 Stk. 11-23-1					
TRUCK DUMPER 58 TONS 135" x 15 x 3 m					
CONSOLE + BEARING					
W. Morat AG, Fahrzeugbau					
2577 Finsterhennen / Schweiz					
700'290					

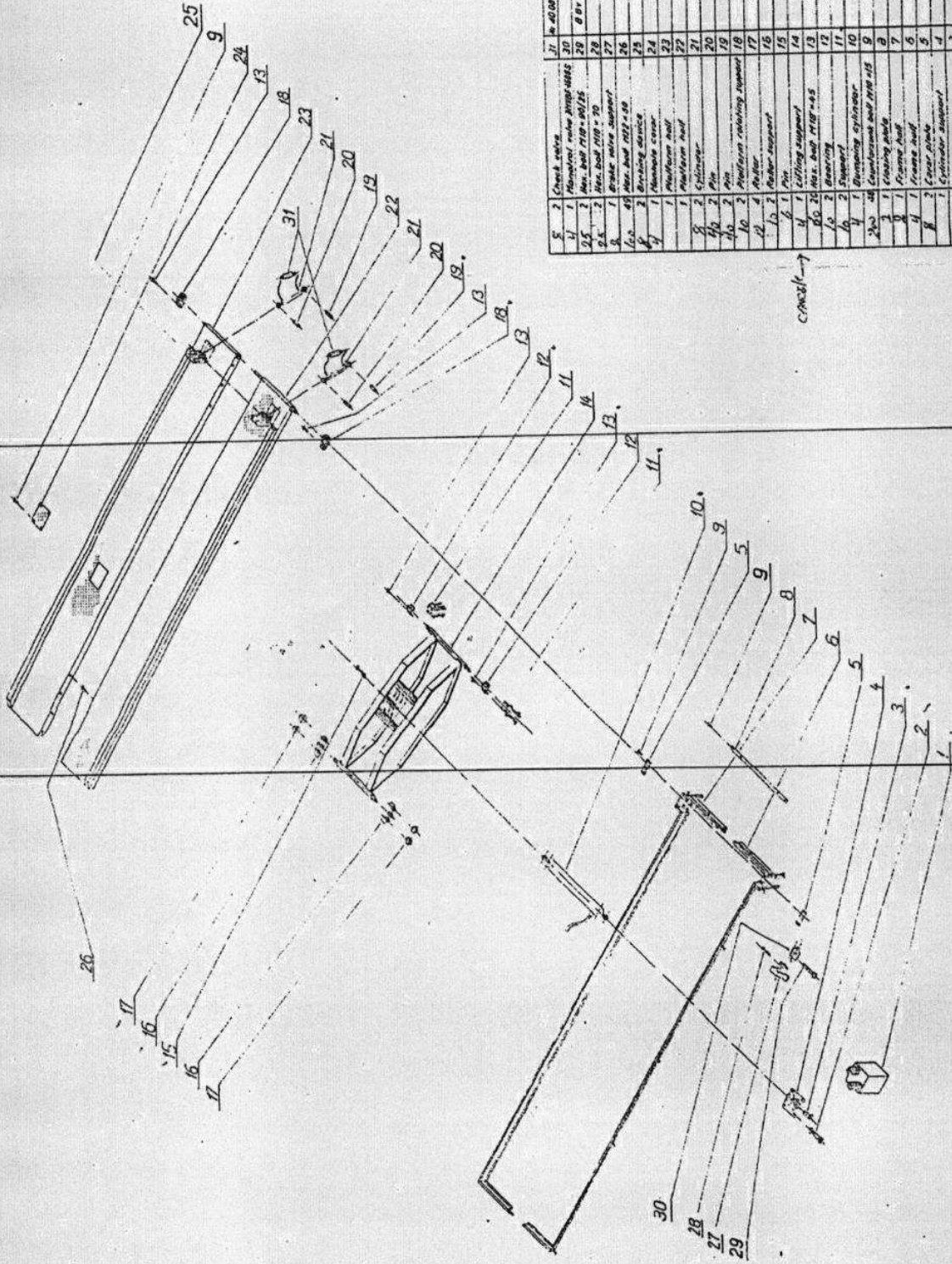




1. Part	400 715	1/1	1/1	1/1
2. Securing	400 715	1/1	1/1	1/1
3. Part	400 715	1/1	1/1	1/1
4. Part	400 715	1/1	1/1	1/1
5. Part	400 715	1/1	1/1	1/1
6. Part	400 715	1/1	1/1	1/1

TRUCK BUMPER 30 TONS (150-15-3 m)  
W. Moroff AG, Fahrzeugbau  
7377, Eisingen / Schweiz

100 232

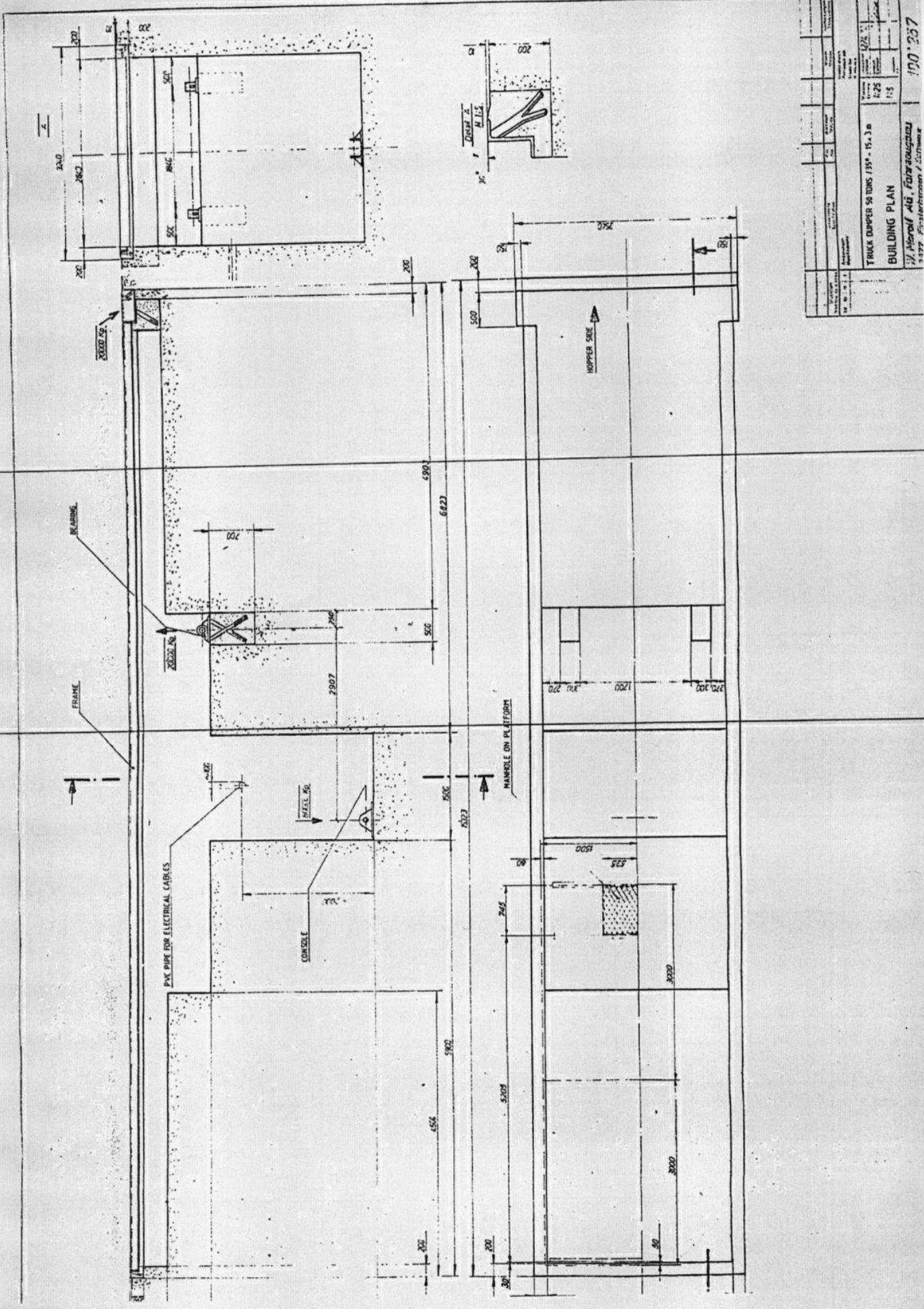


№	Наименование детали	Кол-во	№ детали	Примечание
1	Чашка, левая	1	100 230	Hydraul.
2	Чашка, правая	1	100 230	Hydraul.
3	Платформа	1	100 231	Hydraul.
4	Платформа	1	100 231	Hydraul.
5	Платформа	1	100 231	Hydraul.
6	Платформа	1	100 231	Hydraul.
7	Платформа	1	100 231	Hydraul.
8	Платформа	1	100 231	Hydraul.
9	Платформа	1	100 231	Hydraul.
10	Платформа	1	100 231	Hydraul.
11	Платформа	1	100 231	Hydraul.
12	Платформа	1	100 231	Hydraul.
13	Платформа	1	100 231	Hydraul.
14	Платформа	1	100 231	Hydraul.
15	Платформа	1	100 231	Hydraul.
16	Платформа	1	100 231	Hydraul.
17	Платформа	1	100 231	Hydraul.
18	Платформа	1	100 231	Hydraul.
19	Платформа	1	100 231	Hydraul.
20	Платформа	1	100 231	Hydraul.
21	Платформа	1	100 231	Hydraul.
22	Платформа	1	100 231	Hydraul.
23	Платформа	1	100 231	Hydraul.
24	Платформа	1	100 231	Hydraul.
25	Платформа	1	100 231	Hydraul.
26	Платформа	1	100 231	Hydraul.
27	Платформа	1	100 231	Hydraul.
28	Платформа	1	100 231	Hydraul.
29	Платформа	1	100 231	Hydraul.
30	Платформа	1	100 231	Hydraul.
31	Платформа	1	100 231	Hydraul.

TRUCK DUMPER 50 TONS  
 35' x 15' x 3 m  
 ERECTION PLAN  
 W. H. Hall Maschinenbau

100 233

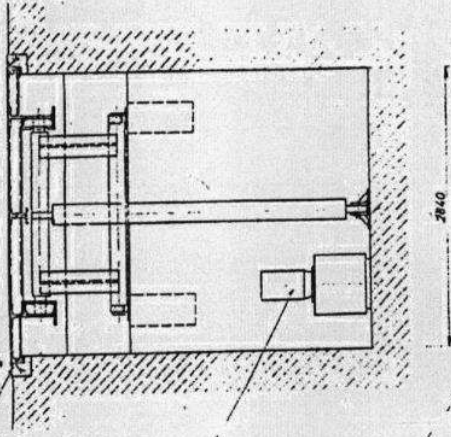




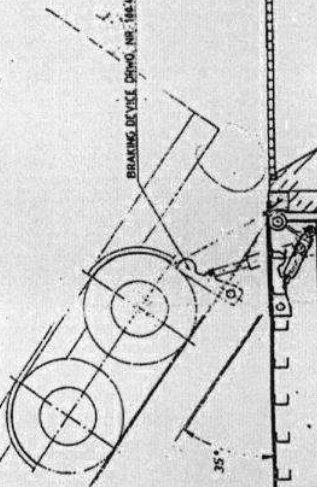
Project Name	TRUCK DUMPER 56 TONS (35° - 15 x 3 m)
Scale	1:25
Sheet No.	1:5
Building Plan	
Author	J. H. H. H.
Checked	
Approved	
Date	
Sheet No.	100-237
Project No.	
Client	
Location	
Contract No.	
Design No.	
Revision	

BASE DRWG. NR. 184311

HYDRAULIC UNIT DRWG. NR. 185334



BRACING DEVICE DRWG. NR. 184311



CYLINDER DRWG. NR. 200718

CONSOLE - BEARING DRWG. NR. 180739 \*

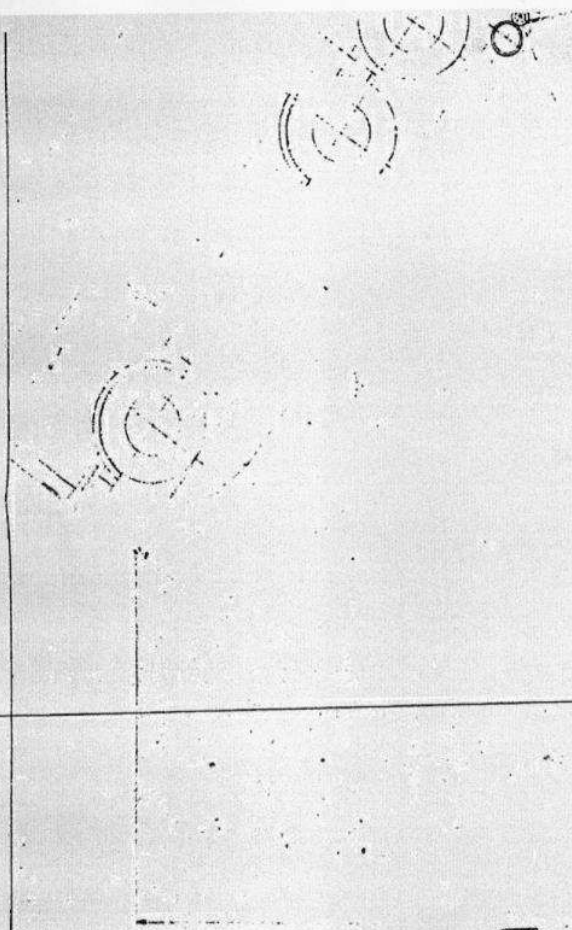
700

6900

6427

BUILDING PLAN DRWG. NR. 180729

Stock	Disposition	Pos.	Material	Modell	Drucklegung
1	1	1	1	1	1
Anweisung: Zs. 100 237 war Zs. 11-37-f Modell: 100 237 Drucklegung: 100 237 Blatt: 1-25 Blattzahl: 25 Blattgröße: 15 x 3 m / 35° Blatttitel: TRUCK DUMPER 50 TONS Blattinhalt: PLATFORM 15 x 3 m / 35° Blattverfasser: W. MAROLF AG, Fahrzeugbau Blattverleger: 2577 Fisterhennen / Schweiz					
					50 156



PLATFORM DRAWG. NR. 108729

LIFTING SUPPORT DRAWG. NR. 108728

4500

DUMPING CYLINDER DRAWG. NR. Z EC-215.3

CYLINDER SUPPORT DRAWG. NR. 108731

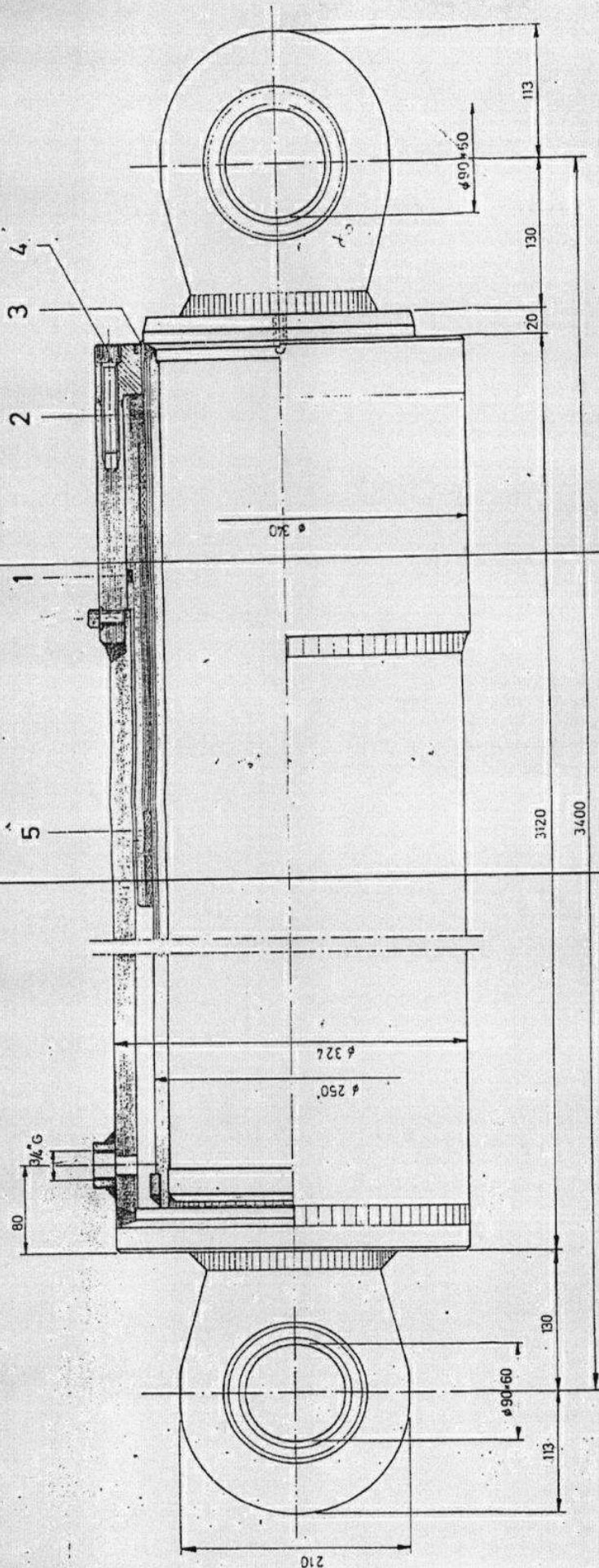
200

6500

1500







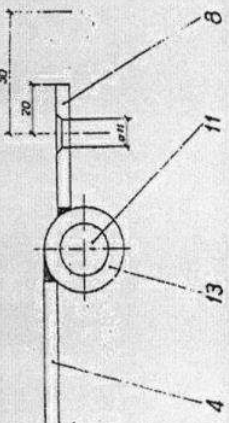
QTY	DESCRIPTION	UNIT	QTY	DESCRIPTION	UNIT
4	GUIDE TAKE	51			
4	COUNTERSINK BOLT M16 x 60	10.9 (10K)			
1	STRIPPER Ø 250 SPECIAL				
1	PACKING Ø 250/280 x 50.5				
1	O RING Ø 6.99 x 272.4				

QTY	DESCRIPTION	UNIT	QTY	DESCRIPTION	UNIT
4	Führungsbänder Ø 250/256	PTFE			
24	Imbus M16 x 60	10.9 (10K)			
1	Abstreifer Ø 250 spez.				
1	Packung Ø 250/280 x 50.5				
1	O-Ring Ø 6.99 x 272.4				

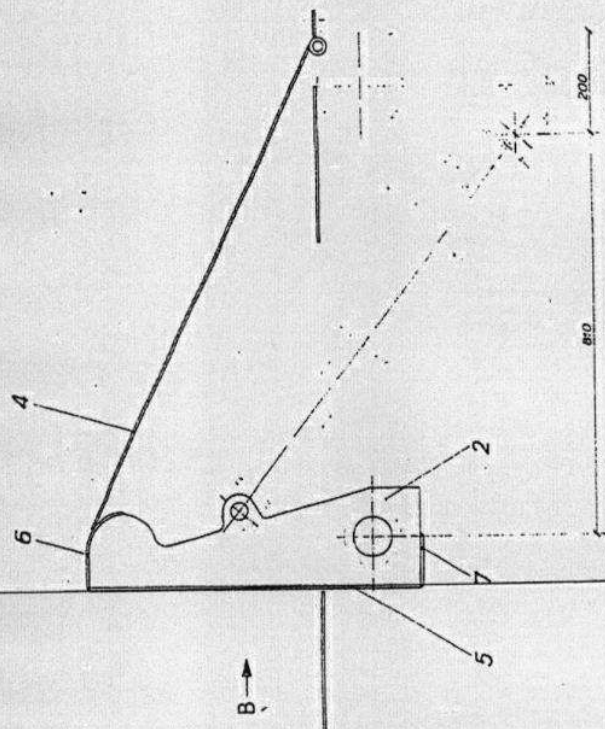
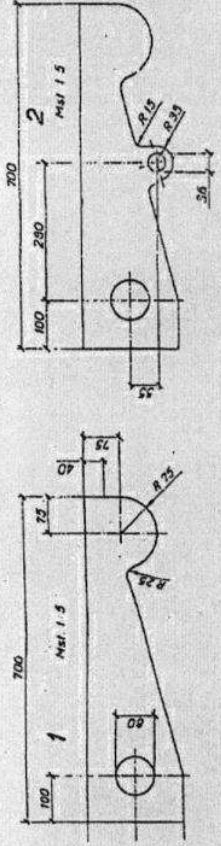
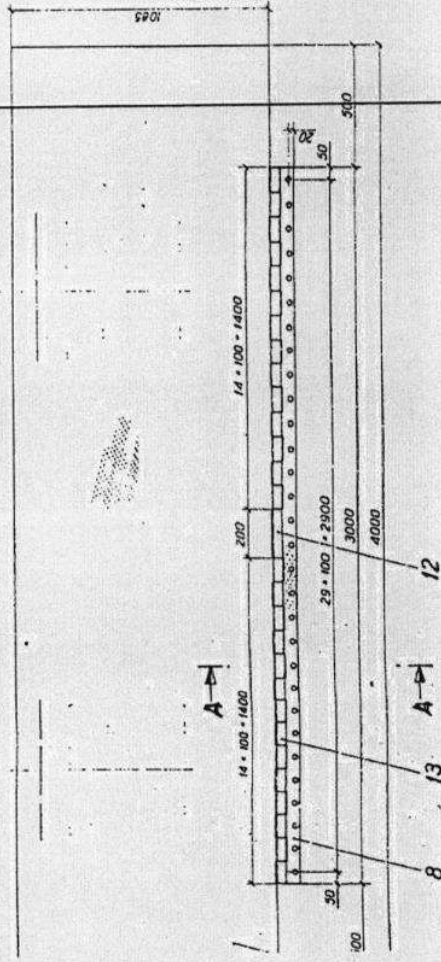
MAROLF FINSTRIELEN  
 ERSATZTEILZEICHNUNG  
**TAUCHKOLBEN ZYL**  
 Ø 250 x 2550mm Hub  
 SPARE PART DRAWING  
 PISTON CYLINDER Ø 250 x 2550mm STROKE

22.01.75  
 1-25  
 2EZ-295.3

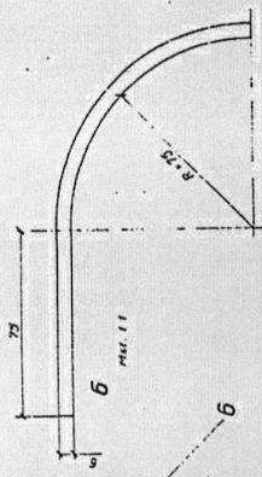
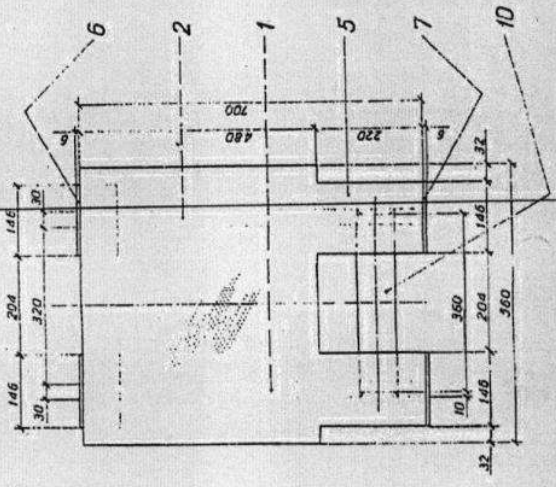




SECTION A-A  
M.S.T. 1.5



VIEW FROM B  
M.S.T. 1.5



QTY	DESCRIPTION	UNIT	14	13	12	11	10	9	8	7	6	5	4	3	2	1
26	3/8" x 35/21"	• 100	13	31	33											
1	3/8" x 35/21"	• 200	12	31	33											
1	Rd # 20	• 3000	11	31	33											
2	Rd # 40	• 360	10	31	33											
1	Chaperon plate	50" x 3000"	8	31	37-2											
4	Chaperon plate	100" x 146"	7	31	37-2											
4	3/8"	146" x 193"	6	31	37-2											
2	Chaperon plate	350" x 700"	5	31	37-2											
1	Chaperon plate	1085" x 4000"	4	31	37-2											
2	Fl 200/30	• 700	2	31	37											
2	Fl 200/30	• 700	1	31	37											

TRUCK BUMPER 50 TONS (35" x 15" x 3")  
BRAKING DEVICE  
100 431

